

Berechne!

$125 + 8 = \underline{\quad}$

$136 + 50 = \underline{\quad}$

$126 + 44 = \underline{\quad}$

$174 + 9 = \underline{\quad}$

$89 + 70 = \underline{\quad}$

$157 + 27 = \underline{\quad}$

$119 - 8 = \underline{\quad}$

$193 - 70 = \underline{\quad}$

$182 - 37 = \underline{\quad}$

$191 - 6 = \underline{\quad}$

$144 - 80 = \underline{\quad}$

$200 - 64 = \underline{\quad}$

$9 \cdot 7 + \underline{\quad} = 103$

$5 \cdot \underline{\quad} + 25 = 70$

$39 : 8 = \underline{\quad}$

$8 \cdot 9 + \underline{\quad} = 96$

$7 \cdot \underline{\quad} + 33 = 68$

$88 : 9 = \underline{\quad}$

$7 \cdot 6 + \underline{\quad} = 71$

$8 \cdot \underline{\quad} + 50 = 114$

$47 : 4 = \underline{\quad}$

Notiere die Summen

$45 + 78 = \underline{\quad}$

$56 + 97 = \underline{\quad}$

$38 + 86 = \underline{\quad}$

$59 + 65 = \underline{\quad}$

$67 + 94 = \underline{\quad}$

$45 + 77 = \underline{\quad}$

Addiere im Kopf

$146 + 67 + 86 = \underline{\quad}$

$257 + 85 + 59 = \underline{\quad}$

$368 + 75 + 96 = \underline{\quad}$

Trage die fehlenden Zahlen ein

$175 + 86 \underline{\quad} + 79 \underline{\quad} + 68 \underline{\quad} + 94 \underline{\quad} + 59 = \underline{\quad}$

Wie viel fehlt zum nächsten Hunderter?

$256 + \underline{\quad} = 300$

$369 + \underline{\quad} = 400$

$562 + \underline{\quad} = 600$

$721 + \underline{\quad} = 800$

100

Ergänze zum nächsten Tausender**1000**

$925 + \underline{\quad\quad} = 1000$

$953 + \underline{\quad\quad} = 1000$

$917 + \underline{\quad\quad} = 1000$

$932 + \underline{\quad\quad} = 1000$

Gib jeweils den Unterschied an

$91 - 39 = \underline{\quad\quad}$

$74 - 29 = \underline{\quad\quad}$

$83 - 57 = \underline{\quad\quad}$

$85 - 49 = \underline{\quad\quad}$

Subtrahiere im Kopf

$823 - 67 - 86 = \underline{\quad\quad}$

$672 - 68 - 72 = \underline{\quad\quad}$

$745 - 73 - 65 = \underline{\quad\quad}$

Rechne aus und überprüfe mit der Umkehraufgabe!

$390 - 220 = \underline{\quad\quad}$

$942 - 5 = \underline{\quad\quad}$

$667 + 8 = \underline{\quad\quad}$

U: $\underline{\quad\quad\quad\quad}$

U: $\underline{\quad\quad\quad\quad}$

U: $\underline{\quad\quad\quad\quad}$

$523 - 8 = \underline{\quad\quad}$

$791 - 5 = \underline{\quad\quad}$

$137 + 9 = \underline{\quad\quad}$

U: $\underline{\quad\quad\quad\quad}$

U: $\underline{\quad\quad\quad\quad}$

U: $\underline{\quad\quad\quad\quad}$

Rechne aus!

$648 + 12 = \underline{\quad\quad}$

$444 + 23 = \underline{\quad\quad}$

$227 + 70 = \underline{\quad\quad}$

$337 - 15 = \underline{\quad\quad}$

$589 - 63 = \underline{\quad\quad}$

$960 - 49 = \underline{\quad\quad}$



Berechne untereinander!

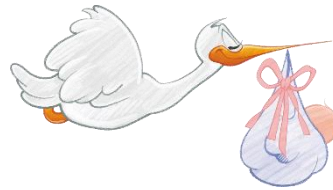
$$\begin{array}{r} 183 \\ + 205 \\ \hline \end{array}$$

$$\begin{array}{r} 616 \\ + 238 \\ \hline \end{array}$$

$$\begin{array}{r} 309 \\ 192 \\ + 487 \\ \hline \end{array}$$

$$\begin{array}{r} 27 \\ 315 \\ + 57 \\ \hline \end{array}$$

$$\begin{array}{r} 409 \\ 53 \\ 257 \\ + 16 \\ \hline \end{array}$$

Rechne aus!

$583 + 20 = \underline{\quad}$

$346 - 60 = \underline{\quad}$

$8 \cdot 4 - 5 = \underline{\quad}$

$467 + 80 = \underline{\quad}$

$528 - 70 = \underline{\quad}$

$9 \cdot 5 - 8 = \underline{\quad}$

$872 + 40 = \underline{\quad}$

$914 - 30 = \underline{\quad}$

$5 \cdot 7 - 6 = \underline{\quad}$

$691 + 70 = \underline{\quad}$

$835 - 90 = \underline{\quad}$

$6 \cdot 8 - 9 = \underline{\quad}$

$50 : 6 = \underline{\quad}$

$8 \cdot 70 + 9 = \underline{\quad}$

$240 : 60 = \underline{\quad}$

$32 : 9 = \underline{\quad}$

$40 \cdot 9 + \underline{\quad} = 390$

$180 : 2 = \underline{\quad}$

$43 : 5 = \underline{\quad}$

$7 \cdot \underline{\quad} + 11 = 431$

$300 : 6 = \underline{\quad}$

$69 : 7 = \underline{\quad}$

$\underline{\quad} \cdot 8 + 20 = 260$

$630 : 90 = \underline{\quad}$

Ergänze zum nächsten Hunderter!

$661 + \underline{\quad} = \underline{\quad}$

$327 + \underline{\quad} = \underline{\quad}$

$909 + \underline{\quad} = \underline{\quad}$

Berechne im Kopf! Beachte die Rechenregeln!

$20 : 60 = \underline{\quad}$

$156 + 120 = \underline{\quad}$

$7 \cdot 7 - 4 = \underline{\quad}$

$8 \cdot 70 = \underline{\quad}$



Und jetzt untereinander!

$$\begin{array}{r} 704 \\ - 367 \\ \hline \end{array}$$

$$\begin{array}{r} 905 \\ - 614 \\ \hline \end{array}$$

$$\begin{array}{r} 840 \\ - 97 \\ \hline \end{array}$$

$$\begin{array}{r} 764 \\ - 379 \\ \hline \end{array}$$

$409 : 5 = \underline{\hspace{2cm}}$

$679 : 7 = \underline{\hspace{2cm}}$

$414 : 6 = \underline{\hspace{2cm}}$

$319 : 4 = \underline{\hspace{2cm}}$

Rechne aus!



$42 : 6 = \underline{\hspace{2cm}}$

$28 : 6 = \underline{\hspace{2cm}}$

$4 \cdot 9 - 25 = \underline{\hspace{2cm}}$

$\underline{\hspace{2cm}} \cdot 5 - 11 = 29$

$\underline{\hspace{2cm}} : 7 = 8$

$\underline{\hspace{2cm}} : 3 = 9$

$\underline{\hspace{2cm}} \cdot 8 + 6 = 30$

$\underline{\hspace{2cm}} \cdot 8 - 15 = 87$

$40 : 7 = \underline{\hspace{2cm}}$

$\underline{\hspace{2cm}} \cdot 4 = 32$

$6 \cdot 7 + \underline{\hspace{2cm}} = 61$

$8 \cdot 7 - \underline{\hspace{2cm}} = 72$

$\underline{\hspace{2cm}} \cdot 9 = 54$

$7 \cdot 5 = \underline{\hspace{2cm}}$

$8 \cdot \underline{\hspace{2cm}} + 5 = 37$

$8 \cdot \underline{\hspace{2cm}} - 6 = 26$

Addiere!

$$\begin{array}{r} 536 \\ + 362 \\ \hline \end{array}$$

$$\begin{array}{r} 287 \\ + 698 \\ \hline \end{array}$$

$$\begin{array}{r} 496 \\ + 504 \\ \hline \end{array}$$

$$\begin{array}{r} 325 \\ 242 \\ + 378 \\ \hline \end{array}$$

$$\begin{array}{r} 442 \\ 334 \\ + 334 \\ \hline \end{array}$$

$$\begin{array}{r} 135 \\ 84 \\ 345 \\ + 275 \\ \hline \end{array}$$

$$\begin{array}{r} 187 \\ 99 \\ 245 \\ + 104 \\ \hline \end{array}$$

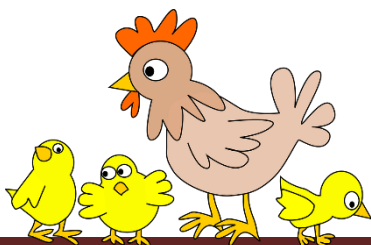
Subtrahiere!

$$\begin{array}{r} 898 \\ - 647 \\ \hline \end{array}$$

$$\begin{array}{r} 835 \\ - 386 \\ \hline \end{array}$$

$$\begin{array}{r} 721 \\ - 419 \\ \hline \end{array}$$

$$\begin{array}{r} 56 \square \\ - 41 \square \\ \hline \square 4 6 \end{array}$$



Addiere und subtrahiere untereinander.

$$\begin{array}{r} 314 \\ 207 \\ + 159 \\ \hline \end{array}$$

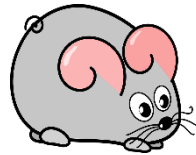
$$\begin{array}{r} 98 \\ 179 \\ 256 \\ + 88 \\ \hline \end{array}$$

$$\begin{array}{r} 609 \\ - 191 \\ \hline \end{array}$$

$$\begin{array}{r} 843 \\ - 597 \\ \hline \end{array}$$

$$\begin{array}{r} 750 \\ - 298 \\ \hline \end{array}$$

Fülle die Lücken!



$540 = \underline{\quad} \cdot 60$

$480 = \underline{\quad} \cdot 80$

$350 : 70 = \underline{\quad}$

$360 = \underline{\quad} \cdot 40$

$540 = \underline{\quad} \cdot 50$

$360 : 90 = \underline{\quad}$

$6 \cdot 90 - 60 = \underline{\quad}$

$9 \cdot 70 - 60 = \underline{\quad}$

$4 \cdot 80 + 70 = \underline{\quad}$

$520 = \underline{\quad} \cdot 80 + \underline{\quad}$

$310 = \underline{\quad} \cdot 70 + \underline{\quad}$

$410 = \underline{\quad} \cdot 50 + \underline{\quad}$

$380 = \underline{\quad} \cdot 60 + \underline{\quad}$

Rechne aus!

$6 \cdot 70 + 9 = \underline{\quad}$

$7 \cdot \underline{\quad} = 490$

$14 + 8 \cdot 90 = \underline{\quad}$

$60 \cdot \underline{\quad} = 480$

$450 : 9 - 25 = \underline{\quad}$

$\underline{\quad} \cdot 40 = 360$

$640 : 80 + 7 = \underline{\quad}$

$350 : \underline{\quad} = 50$



$$\begin{array}{r} 145 \\ 152 \\ + 1408 \\ \hline \end{array}$$

$$\begin{array}{r} 652 \\ + 794 \\ \hline \end{array}$$

$$\begin{array}{r} 19 \square \\ + \square 7 \\ \hline 561 \end{array}$$

$$\begin{array}{r} \square 95 \\ + 3 \square \\ \hline 822 \end{array}$$

Arbeitsblatt 6



Löse mit der Umkehraufgabe!

$$\underline{\quad} + 218 = 630 \quad \text{U: } \underline{\hspace{10cm}}$$

$$\underline{\quad} + 225 = 520 \quad \text{U: } \underline{\hspace{10cm}}$$

Dividieren mit Zehnerzahlen

$1000 : 100 = \underline{\quad}$

$500 : 50 = \underline{\quad}$

$480 : \underline{\quad} = 8$

$100 : 10 = \underline{\quad}$

$500 : 5 = \underline{\quad}$

$270 : \underline{\quad} = 30$

$800 : 80 = \underline{\quad}$

$900 : 30 = \underline{\quad}$

$560 : \underline{\quad} = 70$

$600 : 20 = \underline{\quad}$

$1000 : 500 = \underline{\quad}$

$810 : \underline{\quad} = 9$

$630 : 90 = \underline{\quad}$

$160 : 40 = \underline{\quad}$

$630 : 70 = \underline{\quad}$

Kreuz und quer!

$404 + 249 = \underline{\quad}$

$900 - 6 = \underline{\quad}$

$200 - 130 = \underline{\quad}$

$6 \cdot 8 = \underline{\quad}$

$9 \cdot 7 = \underline{\quad}$

$5 \cdot 7 = \underline{\quad}$

$9 \cdot 6 = \underline{\quad}$

$200 - 115 = \underline{\quad}$

$460 + 46 = \underline{\quad}$

$420 + 345 = \underline{\quad}$

$300 + 107 = \underline{\quad}$

$50 - 39 = \underline{\quad}$

$8 \cdot 9 = \underline{\quad}$

$4 \cdot 4 = \underline{\quad}$

$9 \cdot 9 = \underline{\quad}$

$200 - 96 = \underline{\quad}$

$350 + 290 = \underline{\quad}$

$8 \cdot 8 = \underline{\quad}$

$6 \cdot 6 = \underline{\quad}$

$9 \cdot 50 = \underline{\quad}$

$60 \cdot 3 = \underline{\quad}$

$212 + 300 = \underline{\quad}$

$30 \cdot 9 = \underline{\quad}$

$80 \cdot 4 = \underline{\quad}$



$180 : 3 = \underline{\quad}$

$\underline{\quad} \cdot 70 = 630$

$\underline{\quad} : 8 = 60$

$2 \cdot \underline{\quad} = 180$

$720 : \underline{\quad} = 90$

$20 \cdot \underline{\quad} = 800$

$248 + 211 = \underline{\quad}$

$400 - 21 = \underline{\quad}$

$1000 - 54 = \underline{\quad}$

$270 + 400 = \underline{\quad}$

$420 + 422 = \underline{\quad}$

$600 - 491 = \underline{\quad}$

$1000 - 440 = \underline{\quad}$

$490 + 242 = \underline{\quad}$

$789 - 510 = \underline{\quad}$

$900 - 183 = \underline{\quad}$

$490 + 242 = \underline{\quad}$

$324 + 400 = \underline{\quad}$

$500 - 175 = \underline{\quad}$

$150 - 74 = \underline{\quad}$

$200 - 181 = \underline{\quad}$



Fülle die Tabelle aus!

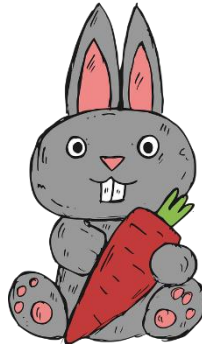
+	53	28	16	49	36
39					
47					

-	47	82	71	25	34
99					
87					

•	3	8	6	4	9
7					
9					

Und noch mehr 1 x 1!

• 9	
5	45
2	
	81
6	
	27
8	



• 7	
5	
7	
	63
8	
	28
6	

Untereinander geht's auch!

68 • 1

34 • 2

23 • 3

21 • 4

11 • 5



Multipliziere!

$10 \cdot 6$

$11 \cdot 7$

$10 \cdot 8$

$11 \cdot 9$

$850 \cdot 1$

$404 \cdot 2$

$232 \cdot 3$

$202 \cdot 4$

$94 \cdot 2$

$53 \cdot 2$

$73 \cdot 2$

$51 \cdot 2$

Rechnen mit Klammern

$2 \cdot (30 + 10) = \underline{\quad}$

$2 \cdot 30 + 10 = \underline{\quad}$

$(100 + 60) : 20 = \underline{\quad}$

$100 + 60 : 20 = \underline{\quad}$

$(90 - 20) \cdot 3 = \underline{\quad}$

$90 - 20 \cdot 3 = \underline{\quad}$

$(320 - 80) : 40 = \underline{\quad}$

$320 - 80 : 40 = \underline{\quad}$

$3 \cdot (40 + 10) = \underline{\quad}$

$8 \cdot (50 + 40) = \underline{\quad}$

$6 \cdot (80 - 50) = \underline{\quad}$

$5 \cdot (70 - 30) = \underline{\quad}$

$(4 + 3) \cdot 30 = \underline{\quad}$

$(2 + 5) \cdot 80 = \underline{\quad}$

$(7 - 4) \cdot 60 = \underline{\quad}$

$(8 - 6) \cdot 70 = \underline{\quad}$

$180 : (70 + 20) = \underline{\quad}$

$640 : (30 + 50) = \underline{\quad}$

$300 : (70 - 20) = \underline{\quad}$

$(120 + 60) : 20 = \underline{\quad}$

$(170 + 40) : 70 = \underline{\quad}$

$(210 - 60) : 30 = \underline{\quad}$

<, >, oder = ?

$(80 - 30) \cdot 7 \underline{\quad} 350$

$(20 + 60) \cdot 5 \underline{\quad} 480$

$(90 - 70) \cdot 8 \underline{\quad} 140$

$(290 + 70) : 60 \underline{\quad} 5$

$(320 - 80) : 30 \underline{\quad} 8$

$(550 + 80) : 90 \underline{\quad} 9$



Kannst du Geheimschrift lesen?

$$(2 + 3) \cdot 40 = \underline{\quad} = P$$

$$(6 + 2) \cdot 60 = \underline{\quad} = R$$

$$(10 + 0) \cdot 7 = \underline{\quad} = S$$

$$3 \cdot (70 + 20) = \underline{\quad} = E$$

$$250 : (38 + 12) = \underline{\quad} = B$$

$$(310 - 70) : 40 = \underline{\quad} = I$$

$$20 \cdot (7 - 4) = \underline{\quad} = T$$

$$(9 - 6) \cdot 10 = \underline{\quad} = S$$

$$2 \cdot (90 - 50) = \underline{\quad} = U$$

$$(75 + 15) : 30 = \underline{\quad} = D$$

$$80 : (17 + 3) = \underline{\quad} = U$$

3	4	5	6	30	60	70	80	200	270	480

Berechne alle Aufgaben blitzschnell im Kopf

$$7200 + 800 = \underline{\hspace{2cm}}$$

$$7200 + 900 = \underline{\hspace{2cm}}$$

$$1300 + 700 = \underline{\hspace{2cm}}$$

$$1300 + 900 = \underline{\hspace{2cm}}$$

$$41700 + 300 = \underline{\hspace{2cm}}$$

$$41700 + 800 = \underline{\hspace{2cm}}$$

$$35400 + 600 = \underline{\hspace{2cm}}$$

$$13200 + 900 = \underline{\hspace{2cm}}$$

$$89752 + 500 = \underline{\hspace{2cm}}$$

$$39700 + 300 = \underline{\hspace{2cm}}$$

$$28100 + 100 = \underline{\hspace{2cm}}$$

$$35000 - 500 = \underline{\hspace{2cm}}$$

$$5500 - 550 = \underline{\hspace{2cm}}$$

$$2555 - 2000 = \underline{\hspace{2cm}}$$

$$5600 + 400 = \underline{\hspace{2cm}}$$

$$5600 + 600 = \underline{\hspace{2cm}}$$

$$38800 + 200 = \underline{\hspace{2cm}}$$

$$38800 + 400 = \underline{\hspace{2cm}}$$

$$13260 + 900 = \underline{\hspace{2cm}}$$

$$13262 + 900 = \underline{\hspace{2cm}}$$

$$89700 + 500 = \underline{\hspace{2cm}}$$

$$89750 + 500 = \underline{\hspace{2cm}}$$

$$27700 - 700 = \underline{\hspace{2cm}}$$

$$28800 - 800 = \underline{\hspace{2cm}}$$

$$9550 - 500 = \underline{\hspace{2cm}}$$

$$6660 - 600 = \underline{\hspace{2cm}}$$



Schreibe die Zahlen auf, die bei den Buchstaben stehen müssten!

	1	2	3	4	5	6	7	8	9	10
A	301	302	303							
B	311	312							c	
C	321									
D	331									
E										
F										
G			b							
H										
I										
J	d						a			

a: _____

b: _____

c: _____

d: _____

Rechne zu den Nachbarzehnern!

126 - ____ = ____

532 - ____ = ____

650 - ____ = ____

126 + ____ = ____

532 + ____ = ____

650 + ____ = ____

Rechne zu den Nachbarhundertern!

540 - ____ = ____

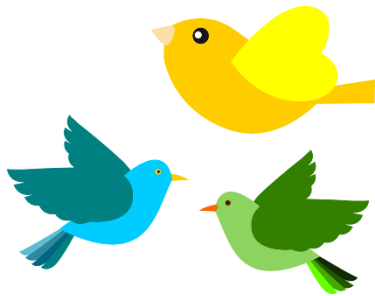
790 - ____ = ____

600 - ____ = ____

540 + ____ = ____

790 + ____ = ____

600 + ____ = ____



Schreibe mit Ziffern:

Dreihundertsiebzig = _____

Vierhundertsevenundsechzig = _____

Tausend = _____

Achthundertvier = _____

Alles durcheinander!

45 + 22 = ____

87 - 35 = ____

62 - 52 = ____

58 + 26 = ____

34 + 47 = ____

100 - 43 = ____

3 • 5 + 8 = ____

6 • 3 + 14 = ____

5 • 3 + 25 = ____

8 • 4 - 6 = ____

9 • 5 - 11 = ____

8 • 5 - 30 = ____

27 : 9 = ____

35 : 7 = ____

11 : 3 = _____

Zerlege in Hunderter, Zehner und Einer!

$946 = \underline{\quad} + \underline{\quad} + \underline{\quad}$

$964 = \underline{\quad} + \underline{\quad} + \underline{\quad}$

$649 = \underline{\quad} + \underline{\quad} + \underline{\quad}$

$496 = \underline{\quad} + \underline{\quad} + \underline{\quad}$

Schreibe die Zahlwörter als Zahlen auf.

Dreihundertvierundsechzig _____

Vierhundertachtundzwanzig _____

Neunhundertsiebenundsechzig _____



Vergleiche und setze > oder < ein.

$327 \underline{\quad} 372$

$273 - 50 \underline{\quad} 237$

$596 \underline{\quad} 583$

$723 - 7 \underline{\quad} 715$

$237 + 40 \underline{\quad} 273$

$237 + 8 \underline{\quad} 244$

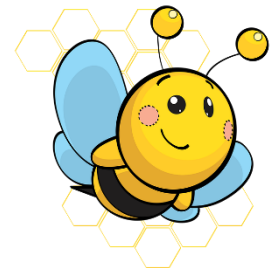
Denke an die Umkehraufgabe!

$\underline{\quad} + 630 = 1000$ _____

$\underline{\quad} + 540 = 720$ _____

$\underline{\quad} - 40 = 483$ _____

$\underline{\quad} - 60 = 459$ _____



Noch einmal multiplizieren!

$3 \cdot 80 = \underline{\quad}$

$6 \cdot 80 = \underline{\quad}$

$6 \cdot 40 = \underline{\quad}$

$8 \cdot 70 = \underline{\quad}$

$5 \cdot 30 = \underline{\quad}$

$7 \cdot 50 = \underline{\quad}$

Addieren im Zahlenraum 1000

123

628

712

548

465

887

377

465228128289503111367

257

090

199

456

845

743

489

634839233394118203504



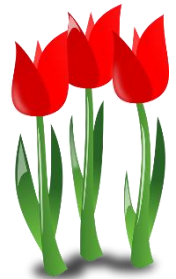
Subtrahieren im Zahlenraum 1000

945 <u>712</u> —	459 <u>234</u> —	234 <u>098</u> —	904 <u>679</u> —	845 <u>459</u> —	734 <u>346</u> —	645 <u>197</u> —
------------------------	------------------------	------------------------	------------------------	------------------------	------------------------	------------------------

349 <u>212</u> —	945 <u>734</u> —	720 <u>566</u> —	560 <u>339</u> —	277 <u>127</u> —	539 <u>345</u> —	498 <u>212</u> —
------------------------	------------------------	------------------------	------------------------	------------------------	------------------------	------------------------

Multiplizieren im Zahlenraum 1000

7 • 90 = ___	3 • 70 = ___	8 • 90 = ___	6 • 60 = ___
5 • 80 = ___	2 • 60 = ___	7 • 50 = ___	9 • 30 = ___
3 • 70 = ___	6 • 60 = ___	4 • 50 = ___	5 • 30 = ___
8 • 50 = ___	8 • 60 = ___	7 • 70 = ___	8 • 80 = ___
9 • 90 = ___	7 • 40 = ___	5 • 50 = ___	5 • 20 = ___
9 • 20 = ___	7 • 80 = ___	7 • 30 = ___	8 • 40 = ___



Division im Zahlenraum 1000 (mit Angabe von Rest)

841 : 90 = ___ 450 : 50 = ___ 563 : 70 = ___ 380 : 80 = ___

Rest _____ Rest _____ Rest _____ Rest _____

Malnehmen mit 10 und 100

• 10	: 10	• 100	: 100																																
<table border="1" style="border-collapse: collapse; width: 100px; height: 100px;"> <tr><td style="text-align: right;">31</td><td>310</td></tr> <tr><td style="text-align: right;">57</td><td>570</td></tr> <tr><td style="text-align: right;">72</td><td>720</td></tr> <tr><td style="text-align: right;">37</td><td>370</td></tr> </table>	31	310	57	570	72	720	37	370	<table border="1" style="border-collapse: collapse; width: 100px; height: 100px;"> <tr><td style="text-align: right;">350</td><td>35</td></tr> <tr><td style="text-align: right;">840</td><td>84</td></tr> <tr><td style="text-align: right;">1000</td><td>100</td></tr> <tr><td style="text-align: right;">230</td><td>23</td></tr> </table>	350	35	840	84	1000	100	230	23	<table border="1" style="border-collapse: collapse; width: 100px; height: 100px;"> <tr><td style="text-align: right;">8</td><td>800</td></tr> <tr><td style="text-align: right;">10</td><td>1000</td></tr> <tr><td style="text-align: right;">7</td><td>700</td></tr> <tr><td style="text-align: right;">6</td><td>600</td></tr> </table>	8	800	10	1000	7	700	6	600	<table border="1" style="border-collapse: collapse; width: 100px; height: 100px;"> <tr><td style="text-align: right;">900</td><td>9</td></tr> <tr><td style="text-align: right;">1100</td><td>11</td></tr> <tr><td style="text-align: right;">600</td><td>6</td></tr> <tr><td style="text-align: right;">200</td><td>2</td></tr> </table>	900	9	1100	11	600	6	200	2
31	310																																		
57	570																																		
72	720																																		
37	370																																		
350	35																																		
840	84																																		
1000	100																																		
230	23																																		
8	800																																		
10	1000																																		
7	700																																		
6	600																																		
900	9																																		
1100	11																																		
600	6																																		
200	2																																		

Bist du fit im Rechnen?

180 : 40 = _____ 30 • 4 = _____ 490 : 70 = _____
 261 : 50 = _____ 270 + 610 = _____ 480 : 70 = _____
 850 - 390 = _____ 560 : 7 = _____ 7 • 80 = _____

Lösung Arbeitsblatt 1Berechne

$125 + 8 = 133$

$136 + 50 = 186$

$126 + 44 = 170$

$174 + 9 = 183$

$89 + 70 = 159$

$157 + 27 = 184$

$119 - 8 = 111$

$193 - 70 = 123$

$182 - 37 = 145$

$191 - 6 = 185$

$144 - 80 = 64$

$200 - 64 = 136$

$9 \cdot 7 + 40 = 103$

$5 \cdot 9 + 25 = 70$

$39 : 8 = 4 \text{ R } 7$

$8 \cdot 9 + 24 = 96$

$7 \cdot 5 + 33 = 68$

$88 : 9 = 9 \text{ R } 7$

$7 \cdot 6 + 29 = 71$

$8 \cdot 8 + 50 = 114$

$47 : 4 = 11 \text{ R } 3$

Notiere die Summen

$45 + 78 = 123$

$56 + 97 = 153$

$38 + 86 = 124$

$59 + 65 = 124$

$67 + 94 = 161$

$45 + 77 = 122$

Addiere im Kopf

$146 + 67 + 86 = 299$

$257 + 85 + 59 = 401$

$368 + 75 + 96 = 539$

Trage die fehlenden Zahlen ein

$175 + 86 \quad 261 \quad + 79 \quad 340 \quad + 68 \quad 408 \quad + 94 \quad 502 \quad + 59 = 561$

Wie viel fehlt zum nächsten Hunderter?

$256 + 44 = 300$

$369 + 31 = 400$

$562 + 38 = 600$

$721 + 79 = 800$

Lösung Arbeitsblatt 2Ergänze zum nächsten Tausender

$925 + 75 = 1000$

$953 + 47 = 1000$

$917 + 83 = 1000$

$932 + 68 = 1000$

Gib jeweils den Unterschied an

$91 - 39 = 52$

$74 - 29 = 45$

$83 - 57 = 26$

$85 - 49 = 36$

Subtrahiere im Kopf

$823 - 67 - 86 = 670$

$672 - 68 - 72 = 532$

$745 - 73 - 65 = 607$

Rechne aus und überprüfe mit der Umkehraufgabe!

$390 - 220 = 170$

$942 - 5 = 937$

$667 + 8 = 675$

U: $170 + 220 = 390$

U: $937 + 5 = 942$

U: $675 - 8 = 667$

$523 - 8 = 515$

$791 - 5 = 786$

$137 + 9 = 146$

U: $515 + 8 = 523$

U: $786 + 5 = 791$

U: $146 - 9 = 137$

Rechne aus!

$648 + 12 = 660$

$444 + 23 = 467$

$227 + 70 = 297$

$337 - 15 = 322$

$589 - 63 = 526$

$960 - 49 = 911$

Lösung Arbeitsblatt 3Berechne untereinander!

$$\begin{array}{r} 183 \\ + 205 \\ \hline 388 \end{array}$$

$$\begin{array}{r} 616 \\ + 238 \\ \hline 854 \end{array}$$

$$\begin{array}{r} 309 \\ 192 \\ + 487 \\ \hline 988 \end{array}$$

$$\begin{array}{r} 27 \\ 315 \\ + 57 \\ \hline 399 \end{array}$$

$$\begin{array}{r} 409 \\ 53 \\ 257 \\ + 16 \\ \hline 735 \end{array}$$

Rechne aus!

$583 + 20 = 603$

$346 - 60 = 286$

$8 \bullet 4 - 5 = 27$

$467 + 80 = 547$

$528 - 70 = 458$

$9 \bullet 5 - 8 = 37$

$872 + 40 = 912$

$914 - 30 = 884$

$5 \bullet 7 - 6 = 29$

$691 + 70 = 761$

$835 - 90 = 745$

$6 \bullet 8 - 9 = 39$

$50 : 6 = 8 \text{ R } 2$

$8 \bullet 70 + 9 = 569$

$240 : 60 = 6$

$32 : 9 = 3 \text{ R } 5$

$40 \bullet 9 + 30 = 390$

$180 : 2 = 90$

$43 : 5 = 8 \text{ R } 3$

$7 \bullet 60 + 11 = 431$

$300 : 6 = 50$

$69 : 7 = 9 \text{ R } 6$

$30 \bullet 8 + 20 = 260$

$630 : 90 = 7$

Ergänze zum nächsten Hunderter!

$661 + 39 = 700$

$327 + 73 = 400$

$909 + 91 = 1000$

Berechne im Kopf! Beachte die Regeln!

$$420 : 60 = 7$$

$$156 + 120 = 276$$

$$7 \cdot 7 - 4 = 45$$

$$8 \cdot 70 = 560$$

Lösung Arbeitsblatt 4

Und jetzt untereinander!

$$\begin{array}{r} 704 \\ - 367 \\ \hline 336 \end{array}$$

$$\begin{array}{r} 905 \\ - 614 \\ \hline 291 \end{array}$$

$$\begin{array}{r} 840 \\ - 97 \\ \hline 743 \end{array}$$

$$\begin{array}{r} 764 \\ - 379 \\ \hline 385 \end{array}$$

$$409 : 5 = 45$$

$$679 : 7 = 97$$

$$414 : 6 = 69$$

$$319 : 4 = 79 \text{ R}3$$

Rechne aus!

$$42 : 6 = 7$$

$$28 : 6 = 4 \text{ R}4$$

$$4 \cdot 9 - 25 = 61$$

$$8 \cdot 5 - 11 = 29$$

$$56 : 7 = 8$$

$$27 : 3 = 9$$

$$3 \cdot 8 + 6 = 30$$

$$9 \cdot 8 - 15 = 87$$

$$40 : 7 = 5 \text{ R}5$$

$$8 \cdot 4 = 32$$

$$6 \cdot 7 + 19 = 61$$

$$8 \cdot 7 - 16 = 72$$

$$6 \cdot 9 = 54$$

$$7 \cdot 5 = 35$$

$$8 \cdot 4 + 5 = 37$$

$$8 \cdot 4 - 6 = 26$$

Addiere!

$$\begin{array}{r} 536 \\ + 362 \\ \hline 898 \end{array}$$

$$\begin{array}{r} 287 \\ + 698 \\ \hline 985 \end{array}$$

$$\begin{array}{r} 496 \\ + 504 \\ \hline 1000 \end{array}$$

$$\begin{array}{r} 325 \\ 242 \\ + 378 \\ \hline 945 \end{array}$$

$$\begin{array}{r} 442 \\ 334 \\ + 334 \\ \hline 1110 \end{array}$$

$$\begin{array}{r} 135 \\ 84 \\ 345 \\ + 275 \\ \hline 839 \end{array}$$

$$\begin{array}{r} 187 \\ 99 \\ 245 \\ + 104 \\ \hline 635 \end{array}$$

Subtrahiere!

$$\begin{array}{r} 898 \\ - 647 \\ \hline 251 \end{array}$$

$$\begin{array}{r} 835 \\ - 386 \\ \hline 449 \end{array}$$

$$\begin{array}{r} 721 \\ - 419 \\ \hline 302 \end{array}$$

$$\begin{array}{r} 562 \\ - 416 \\ \hline 146 \end{array}$$

Lösung Arbeitsblatt 5

Addiere und subtrahiere untereinander.

$$\begin{array}{r} 314 \\ 207 \\ + 159 \\ \hline 680 \end{array}$$

$$\begin{array}{r} 98 \\ 179 \\ 256 \\ + 88 \\ \hline 621 \end{array}$$

$$\begin{array}{r} 609 \\ - 191 \\ \hline 418 \end{array}$$

$$\begin{array}{r} 843 \\ - 597 \\ \hline 246 \end{array}$$

$$\begin{array}{r} 750 \\ - 298 \\ \hline 452 \end{array}$$

Fülle die Lücken!

$540 = 9 \cdot 60$

$360 = 9 \cdot 40$

$480 = 6 \cdot 80$

$540 = 9 \cdot 50$

$350 : 70 = 5$

$360 : 90 = 4$

$6 \cdot 90 - 60 = 480$

$9 \cdot 70 - 60 = 570$

$4 \cdot 80 + 70 = 390$

$520 = 6 \cdot 80 + 40$

$310 = 4 \cdot 70 + 30$

$410 = 8 \cdot 50 + 10$

$380 = 6 \cdot 60 + 20$

Rechne aus!

$6 \cdot 70 + 9 = 429$

$7 \cdot 70 = 490$

$14 + 8 \cdot 90 = 734$

$60 \cdot 8 = 480$

$450 : 9 - 25 = 25$

$9 \cdot 40 = 360$

$640 : 80 + 7 = 87$

$350 : 7 = 50$

$$\begin{array}{r} 145 \\ 152 \\ +1408 \\ \hline 1705 \end{array}$$

$$\begin{array}{r} 652 \\ +794 \\ \hline 1446 \end{array}$$

$$\begin{array}{r} 194 \\ +367 \\ \hline 561 \end{array}$$

$$\begin{array}{r} 495 \\ +327 \\ \hline 822 \end{array}$$

Lösung Arbeitsblatt 6Löse mit der Umkehraufgabe!

$412 + 218 = 630 \quad \text{U: } 630 - 218 = 412$

$295 + 225 = 520 \quad \text{U: } 520 - 225 = 295$

Dividieren mit Zehnerzahlen

$1000 : 100 = 10$

$500 : 50 = 10$

$480 : 60 = 8$

$100 : 10 = 10$

$500 : 5 = 100$

$270 : 9 = 30$

$800 : 80 = 10$

$900 : 30 = 30$

$560 : 8 = 70$

$600 : 20 = 30$

$1000 : 500 = 2$

$810 : 90 = 9$

$630 : 90 = 7$

$160 : 40 = 4$

$630 : 70 = 9$

Kreuz und quer!

$404 + 249 = 653$

$900 - 6 = 894$

$200 - 130 = 70$

$6 \cdot 8 = 48$

$9 \cdot 7 = 63$

$5 \cdot 7 = 35$

$9 \cdot 6 = 54$

$200 - 115 = 85$

$460 + 46 = 506$

$420 + 345 = 765$

$300 + 107 = 407$

$50 - 39 = 11$

$8 \cdot 9 = 72$

$4 \cdot 4 = 16$

$9 \cdot 9 = 81$

$200 - 96 = 104$

$350 + 290 = 640$

$8 \cdot 8 = 64$

$6 \cdot 6 = 36$

$9 \cdot 50 = 450$

$60 \cdot 3 = 180$

$212 + 300 = 512$

$30 \cdot 9 = 270$

$80 \cdot 4 = 320$

$180 : 3 = 60$

$9 \cdot 70 = 630$

$480 : 8 = 60$

$2 \cdot 90 = 180$

$720 : 6 = 90$

$20 \cdot 40 = 800$

$248 + 211 = 459$

$400 - 21 = 379$

$1000 - 54 = 946$

$270 + 400 = 670$

$420 + 422 = 842$

$600 - 491 = 109$

$1000 - 440 = 560$

$490 + 242 = 732$

$789 - 510 = 279$

$900 - 183 = 717$

$490 - 242 = 248$

$324 + 400 = 724$

$500 - 175 = 325$

$150 - 74 = 76$

$200 - 181 = 19$

Lösung Arbeitsblatt 7

Fülle die Tabelle aus!

+	53	28	16	49	36
39	92	67	55	88	75
47	100	75	63	96	83

-	47	82	71	25	34
99	52	17	28	74	65
87	40	5	16	62	53

•	3	8	6	4	9
7	21	56	42	28	63
9	27	72	54	36	81

Und noch mehr 1 x 1!

• 9	
5	45
2	18
9	81
6	54
3	27
8	72

• 7	
5	35
7	49
9	63
8	56
4	28
6	42

Untereinander geht's auch!

$\begin{array}{r} 68 \cdot 1 \\ \hline 68 \end{array}$

$\begin{array}{r} 34 \cdot 2 \\ \hline 68 \end{array}$

$\begin{array}{r} 23 \cdot 3 \\ \hline 69 \end{array}$

$\begin{array}{r} 21 \cdot 4 \\ \hline 84 \end{array}$

$\begin{array}{r} 11 \cdot 5 \\ \hline 55 \end{array}$

Lösung Arbeitsblatt 8

Multipliziere!

$\begin{array}{r} 10 \cdot 6 \\ \hline 60 \end{array}$

$\begin{array}{r} 11 \cdot 7 \\ \hline 77 \end{array}$

$\begin{array}{r} 10 \cdot 8 \\ \hline 80 \end{array}$

$\begin{array}{r} 11 \cdot 9 \\ \hline 99 \end{array}$

$\begin{array}{r} 850 \cdot 1 \\ \hline 850 \end{array}$

$\begin{array}{r} 404 \cdot 2 \\ \hline 808 \end{array}$

$\begin{array}{r} 232 \cdot 3 \\ \hline 696 \end{array}$

$\begin{array}{r} 202 \cdot 4 \\ \hline 808 \end{array}$

$\begin{array}{r} 94 \cdot 2 \\ \hline 188 \end{array}$

$\begin{array}{r} 53 \cdot 2 \\ \hline 106 \end{array}$

$\begin{array}{r} 73 \cdot 2 \\ \hline 146 \end{array}$

$\begin{array}{r} 51 \cdot 2 \\ \hline 102 \end{array}$

Rechnen mit Klammern.

$2 \cdot (30 + 10) = 80$
 $2 \cdot 30 + 10 = 70$

$(100 + 60) : 20 = 8$
 $100 + 60 : 20 = 103$

$(90 - 20) \cdot 3 = 210$
 $90 - 20 \cdot 3 = 30$

$(320 - 80) : 40 = 6$
 $320 - 80 : 40 = 318$

$3 \cdot (40 + 10) = 150$
 $8 \cdot (50 + 40) = 720$
 $6 \cdot (80 - 50) = 180$
 $5 \cdot (70 - 30) = 200$

$(4 + 3) \cdot 30 = 210$
 $(2 + 5) \cdot 80 = 560$
 $(7 - 4) \cdot 60 = 180$
 $(8 - 6) \cdot 70 = 140$

$180 : (70 + 20) = 2$
 $640 : (30 + 50) = 8$
 $300 : (70 - 20) = 6$

$(120 + 60) : 20 = 9$
 $(170 + 40) : 70 = 3$
 $(210 - 60) : 30 = 5$

<, >, oder = ?

$(80 - 30) \cdot 7 \underline{=} 350$
 $(20 + 60) \cdot 5 \underline{=} 480$
 $(90 - 70) \cdot 8 \underline{>} 140$

$(290 + 70) : 60 \underline{>} 5$
 $(320 - 80) : 30 \underline{=} 8$
 $(550 + 80) : 90 \underline{<} 9$

Lösung Arbeitsblatt 9

Kannst du Geheimschrift lesen?

$(2 + 3) \cdot 40 = 200 = P$
 $(6 + 2) \cdot 60 = 480 = R$
 $(10 + 0) \cdot 7 = 70 = S$
 $3 \cdot (70 + 20) = 270 = E$
 $250 : (38 + 12) = 5 = B$
 $(310 - 70) : 40 = 6 = I$

$20 \cdot (7 - 4) = 60 = T$
 $(9 - 6) \cdot 10 = 30 = S$
 $2 \cdot (90 - 50) = 80 = U$
 $(75 + 15) : 30 = 3 = D$
 $80 : (17 + 3) = 4 = U$

3	4	5	6	30	60	70	80	200	270	480
D	U	B	I	S	T	S	U	P	E	R

Berechne alle Aufgaben blitzschnell im Kopf

$7200 + 800 = 8000$
 $7200 + 900 = 8100$
 $1300 + 700 = 2000$
 $1300 + 900 = 2200$

$5600 + 400 = 6000$
 $5600 + 600 = 6200$
 $38800 + 200 = 39000$
 $38800 + 400 = 39200$

$41700 + 300 = 42000$
 $41700 + 800 = 42500$
 $35400 + 600 = 36000$
 $13200 + 900 = 14100$

$13260 + 900 = 14160$
 $13262 + 900 = 14162$
 $89700 + 500 = 90200$
 $89750 + 500 = 90250$

$89752 + 500 = 90252$
 $39700 + 300 = 40000$
 $28100 + 100 = 28200$
 $35000 - 500 = 34500$

$27700 - 700 = 27000$
 $28800 - 800 = 28000$
 $9550 - 500 = 9050$
 $6660 - 600 = 6060$

$$5500 - 550 = 4950$$

$$2555 - 2000 = 555$$

Lösung Arbeitsblatt 10

$$226 + 6 = \underline{232}$$

$$600 - 5 = \underline{595}$$

$$397 + 50 = \underline{447}$$

$$823 - 60 = \underline{763}$$

$$416 + 500 = \underline{916}$$

$$943 - 600 = \underline{343}$$

Aufgabe 2

Schreibe die Zahlen auf, die bei den Buchstaben stehen müssten!

	1	2	3	4	5	6	7	8	9	10
A	301	302	303							
B	311	312							c	
C	321									
D	331									
E										
F										
G			b							
H										
I										
J	d						a			

$$a: \underline{397}$$

$$b: \underline{363}$$

$$c: \underline{319}$$

$$d: \underline{391}$$

Rechne zu den Nachbarzehnern!

$$126 - \underline{6} = \underline{120}$$

$$126 + \underline{4} = \underline{130}$$

$$532 - \underline{2} = \underline{530}$$

$$532 + \underline{8} = \underline{540}$$

$$650 - \underline{10} = \underline{640}$$

$$650 + \underline{10} = \underline{660}$$

Rechne zu den Nachbarhundertern!

$$540 - \underline{40} = \underline{500}$$

$$540 + \underline{60} = \underline{600}$$

$$790 - \underline{90} = \underline{700}$$

$$790 + \underline{10} = \underline{800}$$

$$600 - \underline{100} = \underline{500}$$

$$600 + \underline{100} = \underline{700}$$

Schreibe mit Ziffern:

$$\text{Dreihundertsiebzig} = \underline{370}$$

$$\text{Vierhundertsiebenundsechzig} = \underline{467}$$

$$\text{Tausend} = \underline{1000}$$

$$\text{Achthundertvier} = \underline{804}$$

Alles durcheinander!

$$45 + 22 = 67$$

$$58 + 26 = 84$$

$$3 \cdot 5 + 8 = 23$$

$$8 \cdot 4 - 6 = 18$$

$$27 : 9 = 3$$

$$87 - 35 = 52$$

$$34 + 47 = 81$$

$$6 \cdot 3 + 14 = 32$$

$$9 \cdot 5 - 11 = 34$$

$$35 : 7 = 5$$

$$62 - 52 = 10$$

$$100 - 43 = 57$$

$$5 \cdot 3 + 25 = 30$$

$$8 \cdot 5 - 30 = 40$$

$$11 : 3 = 3 \text{ R } 2$$

Lösung Arbeitsblatt 11

Zerlege in Hunderter, Zehner und Einer!

$$946 = 900 + 40 + 6$$

$$649 = 600 + 40 + 9$$

$$964 = 900 + 60 + 4$$

$$496 = 400 + 90 + 6$$

Schreibe die Zahlwörter als Zahlen auf.

Dreihundertvierundsechzig 364

Vierhundertachtundzwanzig 428

Neunhundertsiebenundsechzig 967

Vergleiche und setze > oder < ein.

$$327 \underline{<} 372$$

$$596 \underline{>} 583$$

$$237 + 40 \underline{>} 273$$

$$273 - 50 \underline{<} 237$$

$$723 - 7 \underline{>} 715$$

$$237 + 8 \underline{>} 244$$

Denke an die Umkehraufgabe!

$$370 + 630 = 1000 \quad 1000 - 630 = 370$$

$$180 + 540 = 720 \quad 720 - 540 = 180$$

$$523 - 40 = 483 \quad 483 + 40 = 523$$

$$519 - 60 = 459 \quad 459 + 60 = 519$$

Noch einmal multiplizieren!

$$3 \cdot 80 = 240$$

$$6 \cdot 80 = 480$$

$$6 \cdot 40 = 240$$

$$8 \cdot 70 = 560$$

$$5 \cdot 30 = 150$$

$$7 \cdot 50 = 350$$

Lösung Arbeitsblatt 12

Addieren im Zahlenraum 1000

123	628	712	548	465	887	377
<u>465</u>	<u>228</u>	<u>128</u>	<u>289</u>	<u>503</u>	<u>111</u>	<u>367</u>
711	856	840	837	968	998	704

257	90	199	456	845	743	489
<u>634</u>	<u>839</u>	<u>233</u>	<u>394</u>	<u>118</u>	<u>203</u>	<u>504</u>
891	929	432	850	963	946	993

Subtrahieren im Zahlenraum 1000

945	459	234	904	845	734	645
<u>712</u>	<u>234</u>	<u>98</u>	<u>679</u>	<u>459</u>	<u>346</u>	<u>197</u>
233	225	136	225	386	388	448

349	945	720	560	277	539	498
<u>212</u>	<u>734</u>	<u>566</u>	<u>339</u>	<u>127</u>	<u>345</u>	<u>212</u>
137	211	154	221	150	194	286

Multiplizieren im Zahlenraum 1000

$7 \cdot 90 = 630$	$3 \cdot 70 = 210$	$8 \cdot 90 = 720$	$6 \cdot 60 = 360$
$5 \cdot 80 = 400$	$2 \cdot 60 = 120$	$7 \cdot 50 = 350$	$9 \cdot 30 = 270$

Mathematik

$3 \cdot 70 = 210$

$8 \cdot 50 = 400$

$9 \cdot 90 = 810$

$9 \cdot 20 = 180$

$6 \cdot 60 = 360$

$8 \cdot 60 = 480$

$7 \cdot 40 = 280$

$7 \cdot 80 = 560$

3. Klasse

$4 \cdot 50 = 200$

$7 \cdot 70 = 490$

$5 \cdot 50 = 250$

$7 \cdot 30 = 210$

Grundrechenarten

$5 \cdot 30 = 150$

$8 \cdot 80 = 640$

$5 \cdot 20 = 100$

$8 \cdot 40 = 320$

Division im Zahlenraum 1000 (mit Angabe von Rest)

$841 : 90 = 9$

R 31

$450 : 50 = 9$

R 0

$563 : 70 = 8$

R 3

$380 : 80 = 4$

R 60

Malnehmen mit 10 und 100

• 10

31	310
57	570
72	720
37	370

: 10

350	35
840	84
1000	100
230	23

• 100

8	800
10	1000
7	700
6	600

: 100

900	9
1100	11
600	6
200	2

Bist du fit im Rechnen?

$180 : 40 =$

$4 \text{ R } 20 \quad 30 \cdot 4 = 120$

$261 : 50 =$

$5 \text{ R } 11 \quad 270 + 610 = 880$

$850 - 390 = 460$

$560 : 7 = 80$

$490 : 70 = 7$

$480 : 70 = 6 \text{ R } 60$

$7 \cdot 80 = 560$